

Driftless Area Initiative Boundary

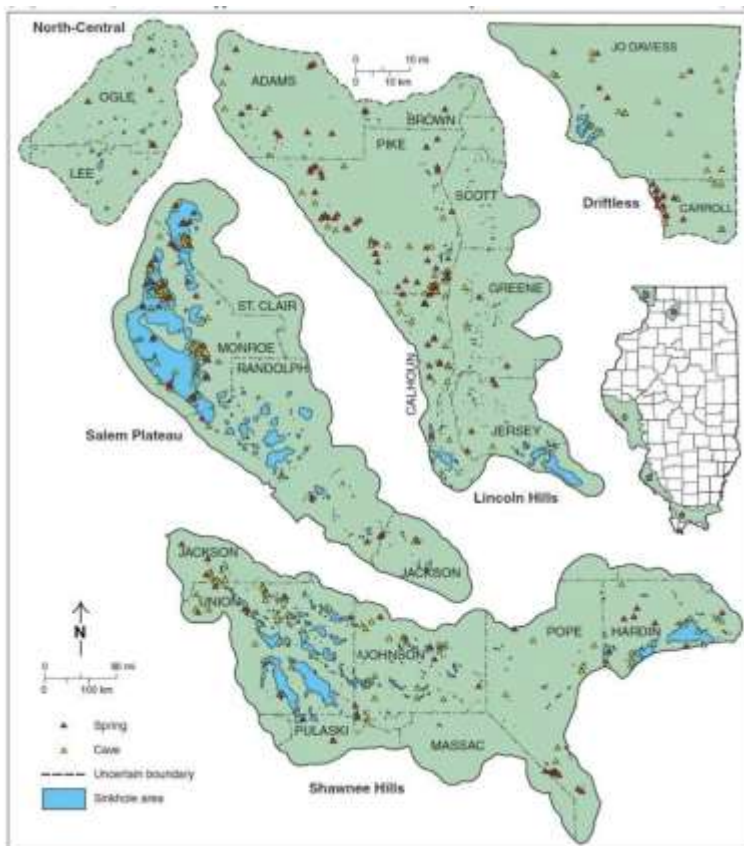
7/9/2012



Map of entire Driftless Region



Regions in Illinois with karst



Areas in Illinois with caves, springs and sinkhole

Additional Resources

Glacial Geology Lesson Plans - <http://intotheoutdoors.org/topics/ice-age-mysteries/>

Illinois Department of Natural Resources, Driftless Area at a Glance-

<https://web.archive.org/web/20140714132812/http://www.dnr.state.il.us/orep/pfc/assessments/dap/ataglance.htm>

Glacier Videos- <https://www.neok12.com/Glaciers.htm>

Illinois' Ice Age Legacy, GeoScience Education Series 14. Champaign, IL: Illinois State Geological Survey. <http://www.isgs.uiuc.edu/servs/pubs/edshome.htm>

Quaternary Glaciation in Illinois. Champaign, IL: Illinois State Geological Survey. <http://www.isgs.uiuc.edu/servs/pubs/edshome.htm>

Information on Karst of region: <http://isgs.illinois.edu/maps/county-maps/karst-terrain/jo-daviess-0>

Info on Algific Slopes: <https://www.dnr.illinois.gov/OI/Documents/Jan07AlgificSlopes.pdf>

US Fish and Wildlife Service info on Driftless Wildlife Habitat and Species:

https://www.fws.gov/refuge/Driftless_Area/wildlife_and_habitat/index.html

Illinois Natural History Survey of the Driftless <http://www.inhs.illinois.edu/research/rra/site1/>

Studies in Natural History (1921) –Chapter 3 on the Erosional History of the Driftless

<https://play.google.com/store/books/details?id=XptJAQAAMAAJ&rdid=book-XptJAQAAMAAJ&rdot=1>

Contributions to Ordovician Paleontology (Ebook) - Chapter on local lead and zinc mining

<https://play.google.com/store/books/details?id=YK4eAQAAlAAJ&rdid=book-YK4eAQAAlAAJ&rdot=1><https://web.archive.org/web/20140714132812/http://www.dnr.state.il.us/orep/pfc/assessments/dap/ataglance.htm>

Endangered and Threatened Species of Illinois, Illinois Department of Natural Resources

<https://www.dnr.illinois.gov/publications/Documents/00000593.pdf>

National Parks Service Map and Images of karst and Caves nationwide:

<https://www.nps.gov/subjects/caves/upload/CaveKarstServiceWidePoster2012.pdf>

Glacial Striations – US Geologic Survey Lessons

<https://education.usgs.gov/lessons/schoolyard/glacialstriations.html>

Wiggers, Ray. *Geology underfoot in Illinois*. Mountain Press Publishing, 1997.

List of local Driftless field trips

Gramercy Park

Beecher St
East Dubuque, IL
(815) 747-3196

Gramercy Park is a 10 acre park overlooking the Mississippi River. This site is the home to 26 ceremonial and burial mounds from the Hopewell Native American culture.

Casper Bluff

870 South Pilot Knob Road
Galena, IL
(815) 858-9100

Casper Bluff is a 85 acre site that contains the Aiken Mound Group. There are 38 long wall-like structures, 12 conical mounds and one thunderbird effigy.

Beattie Park

401 N Main St.
Rockford, IL
(815) 987-8800

Beattie Park includes a grouping of Late Woodland period Indian mounds, including three conical mounds, an effigy mound in the shape of a turtle, and a linear mound.

Keough Effigy Mounds

1683 N. Cross Road
Galena, IL
(815) 858-9100

This site contains early lead mine diggings and Late Woodland Native American mounds, including the only intact bear effigy mound in Illinois.

Historic Lead Mine Shaft

Galena/Jo Daviess Country Historical Society
211 S. Bench Street
Galena, IL
(815) 238-0239

The museum has an original 30 foot deep 1830s lead mine shaft, the only one in the state of Illinois. There are also other exhibits displaying the history of lead mining in the area.

Long Hollow Scenic Overlook

2918 US Hwy 20 W
Elizabeth, IL 61028

This overlook along Highway 20 offers great views of Driftless rolling hills, as well as a picnic area and restroom facilities.

Mississippi Palisades State Park

16327A IL-84
Savanna, IL
(815) 273-2731

The trails at the 2,500 acre Mississippi Palisades State Park put you in touch with the former routes of Native American pathfinders, as well as Driftless landscape including caves and bluffs.

Horseshoe Mound Preserve

1679 N Blackjack Rd
Galena, IL

The preserve, run by the Jo Daviess Conservation Foundation, features scenic outlooks with views across three states. Hiking trails extend throughout the property and offer close views of the city of Galena, plus distant views of Bellevue and Dubuque in Iowa, the Mississippi River, and several other geological mounds in Iowa and Wisconsin.

Apple River Canyon State Park

8763 E Canyon Rd
Apple River, IL
(815) 745-3302

This park features limestone bluffs, deep ravines, springs, streams and wildlife characteristic of the Driftless. Once a part of a vast sea bottom that stretched from the Alleghenies to the Rockies, the scenic canyon area was formed by the winding waters of the Apple River.

Hanover Bluff Nature Area

8995 S. Hanover Hill Rd.
Hanover IL 61041
(815) 745-3302

Hanover Bluff is located on a high dolomite ridge that forms a valley wall of the Mississippi River. Here, six native plant communities survive: sand hill prairie, dry dolomite prairie, dolomite cliff, dry-mesic and mesic upland forest and seep springs. Rare Driftless area plants are found on the highest slopes, including little bluestem, sideoats grama, hairy grama and over 80 other native prairie species.